

KEEPING YOU SAFE IN TIER TWO



SINGLE HOUSEHOLDS ONLY INSIDE

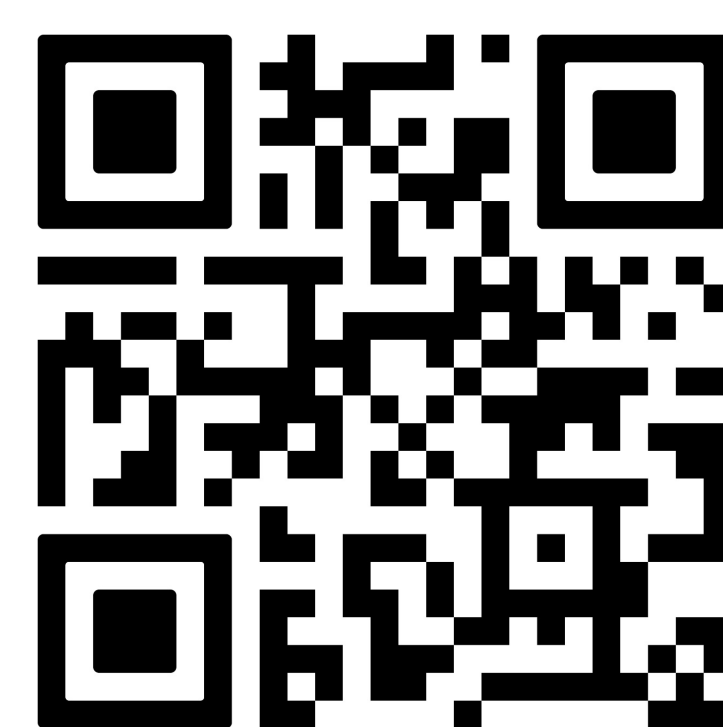
Inside we can only allow groups from single households.



WELCOME BACK!

Stay safe when visiting us, and follow the guidance in place. To see everything we've done, follow the QR code below or visit - www.makinglifepeachy.com/your-visit/

Please be aware alcohol can only be served with a substantial meal.



THE RULE OF SIX OUTSIDE



Following the Government guidance, group size must not exceed six guests, and please avoid mingling with others outside your group.

Please wear a face covering when you're not seated.

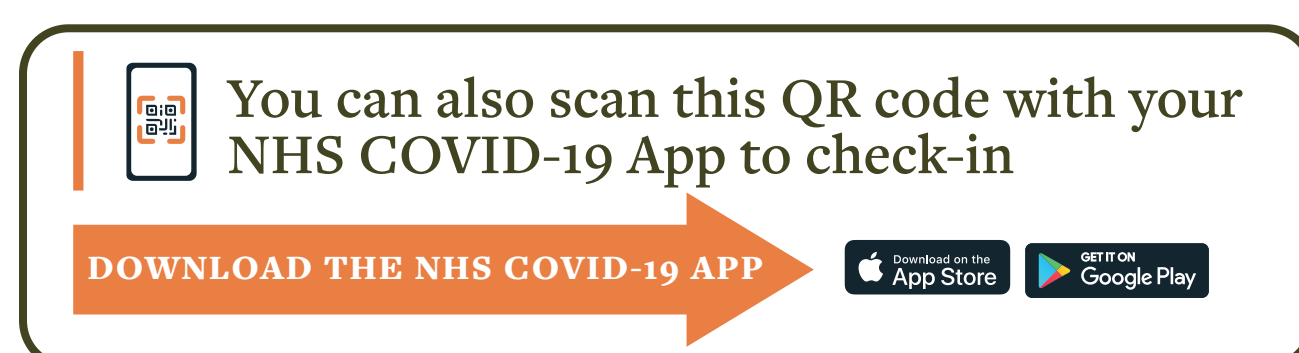


CONTACT DETAILS REQUIRED

To help keep everyone safe all team members and visitors must sign in. Government guidance requires us to take contact details of one guest in each party. Your details will be stored safely in OpenTable, and we will only share them with NHS Test and Trace, if asked, when another guest tests positive for Coronavirus.

STAYING COVID-19 SECURE

There's many ways we've made the pub safe for our guests and team, and have complied with the Government guidance on managing risk.

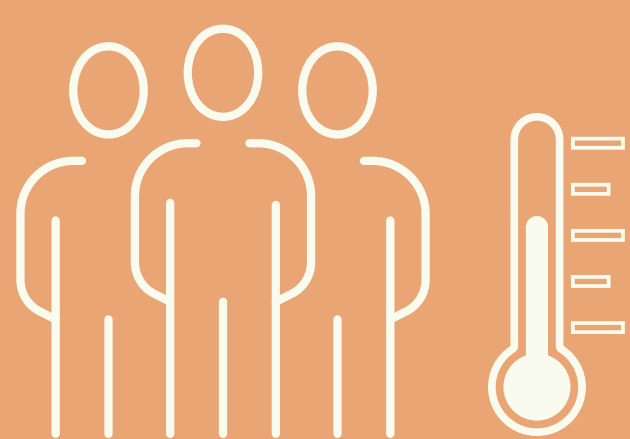


HAND
SANITISER
STATIONS
AROUND
THE PUB
INCLUDING
ENTRANCES
AND EXITS



THOROUGH
CLEANING &
HANDWASHING
PROCEDURES
IN PLACE

WE HAVE ARRANGED
SEATING TO MAINTAIN
SOCIAL DISTANCING,
AND USE PERSPEX
SCREENS TO MANAGE
TRANSMISSION



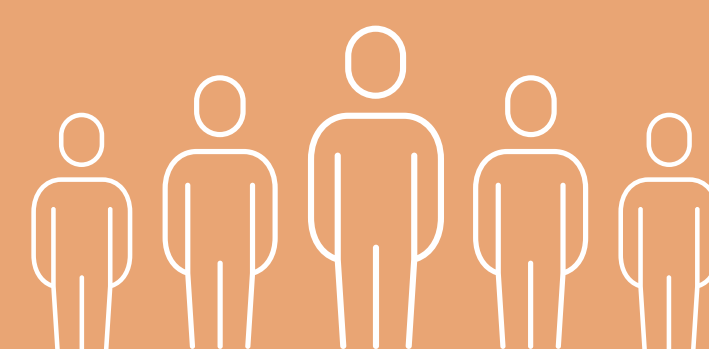
TEAM ARE CHECKED TO BE FIT
FOR WORK BEFORE EACH SHIFT,
INCLUDING TEMPERATURE CHECKS

WE ARE ONLY
ACCEPTING
CARD PAYMENTS



ORDER ON
MOBILE
TECHNOLOGY
TO REDUCE
GUEST AND
TEAM
INTERACTION

ALL TEAM HAVE
BEEN FULLY
COVID-TRAINED



MAKING LIFE PEACHY